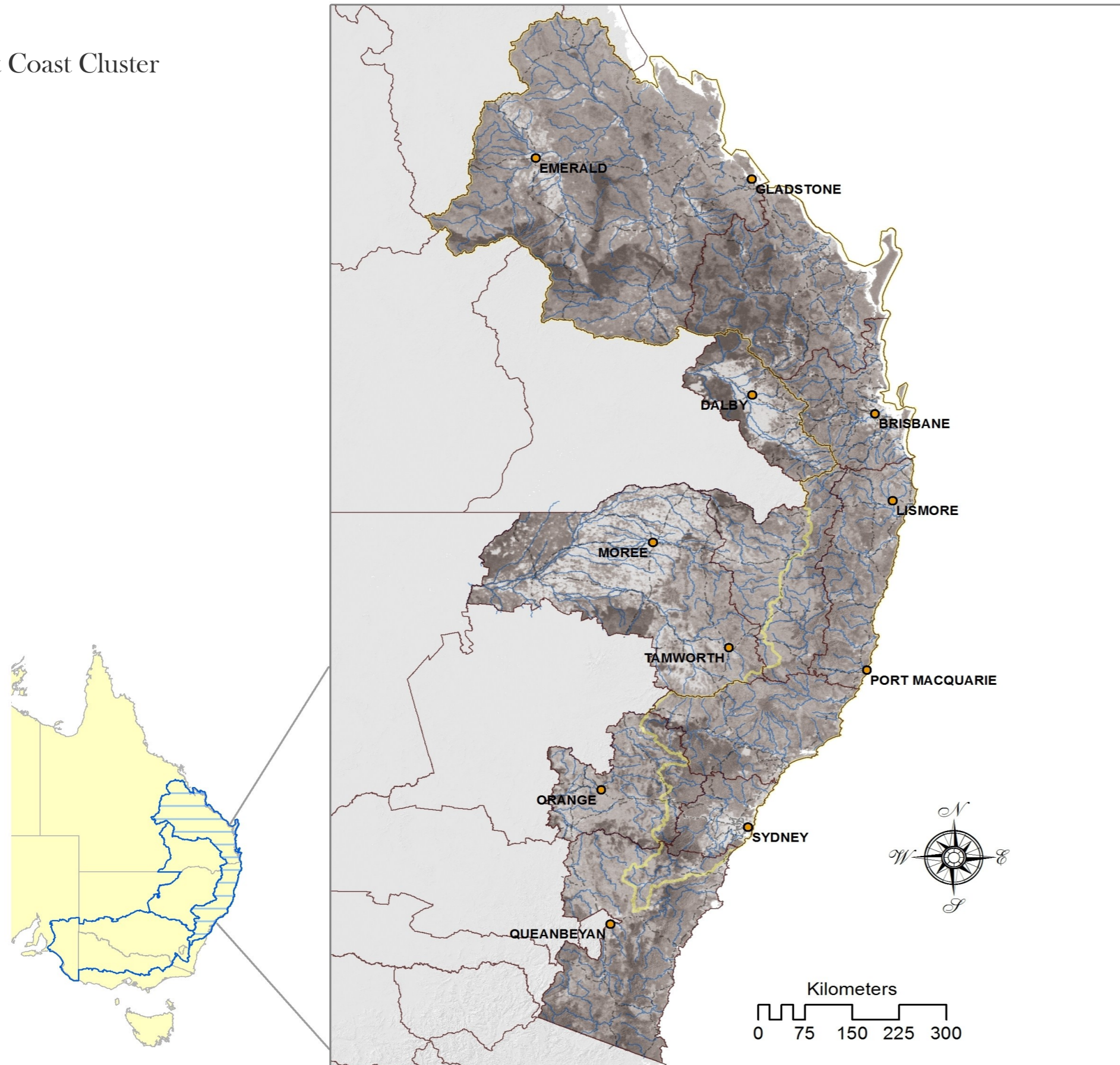


Biodiversity climate adaptation

Manage Benefits 1990-2050

East Coast Cluster



SUMMARY

Manage Benefits are based on the principal of maximising the representation of pre-clearing native vegetation communities by conserving existing vegetation. This map combines locations that are suitable for depleted communities now with locations that will become increasingly important in the future as important communities need to shift to meet a changing climate.

Rates of loss, used to weight the importance of communities, are based on past clearing, degradation and fragmentation, as well as expected future shifts and fluxes of bioclimatic envelopes due to climate change. Expected future distributions of bio-climatic envelopes were derived by averaging the impacts of three climate projections (MPI, CAN and MIROC), at both RCP 4.5 and 8.5.

LEGEND

- Manage Benefits
- HIGH
- LOW
- East Coast, Central Slopes & Murray Basin Clusters
- NRM Boundaries
- East Coast Cluster
- Cities
- Major Rivers
- Principal Roads

Models and map production by OEH NSW; GDM compositional turnover modelling by CSIRO Ecosystem Sciences, with funding from the Australian government.



Office of Environment & Heritage



UNIVERSITY OF SOUTHERN QUEENSLAND

