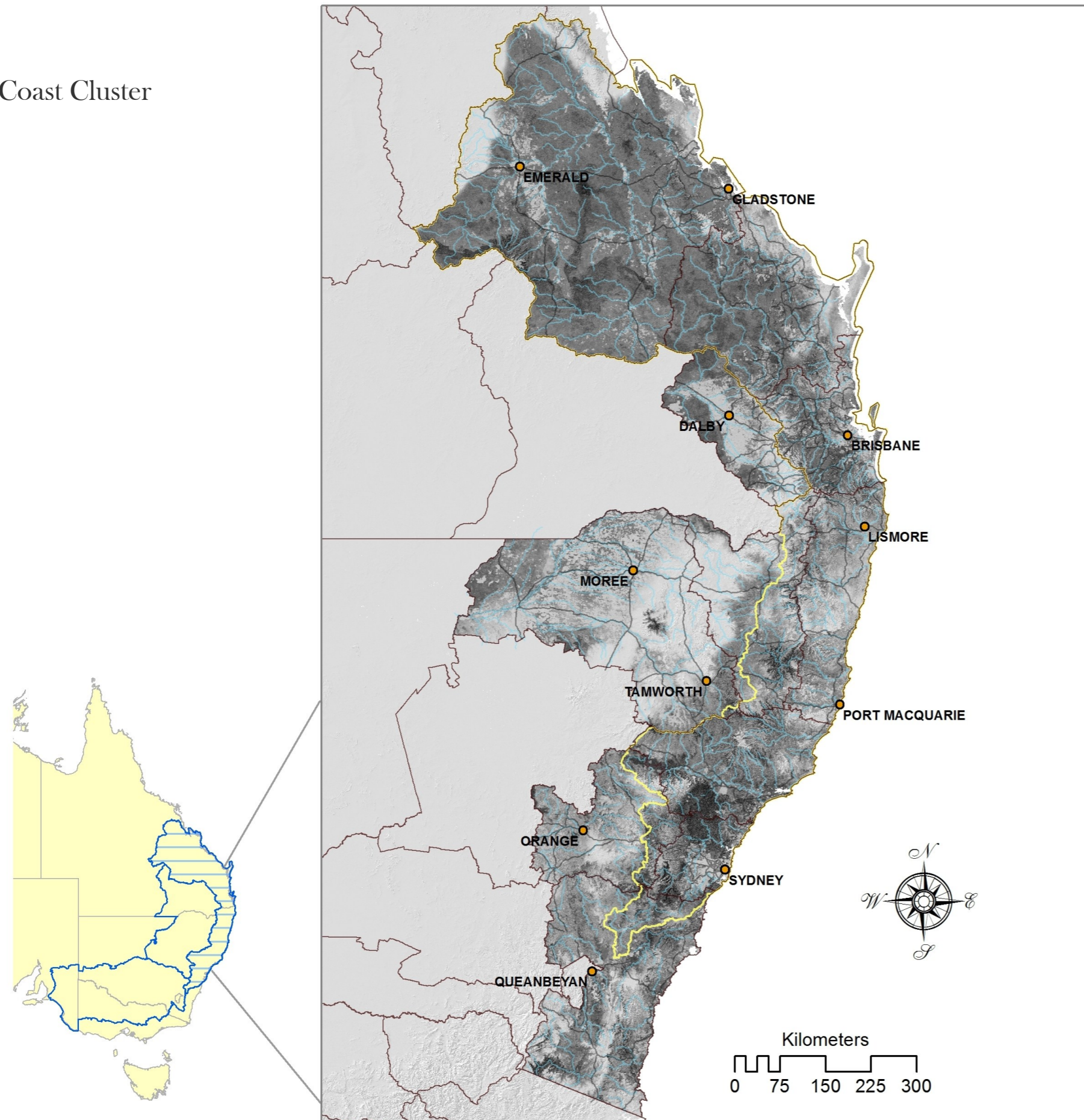


# Degree of fit: 1990 classes in 2050 climate

East Coast Cluster



## SUMMARY

The predicted 'degree of fit' of 1990 bio-climatic classes to 2050 areas based on the 3CMP model that considers bio-climatic suitability, landscape impacts on migration ability and ongoing viability.

Dark areas indicate areas where the capacity (vegetation condition) to support biodiversity is not realised in 2050 with 1990 derived bioclimatic classes, that are either unsuited, are unable to reach these areas, or are insufficient in size to be viable, despite having good condition.

According to the 3CMP model, these areas would either support novel classes or would degrade to a diminished condition.

## LEGEND

Decrease in fit

HIGH

LOW

East Coast, Central Slopes & Murray Basin Clusters

NRM Boundaries

East Coast Cluster

Cities

Major Rivers

Principal Roads

Models and map production by OEH NSW; GDM compositional turnover modelling by CSIRO Ecosystem Sciences, with funding from the Australian government.



An Australian Government Initiative



Office of Environment & Heritage

