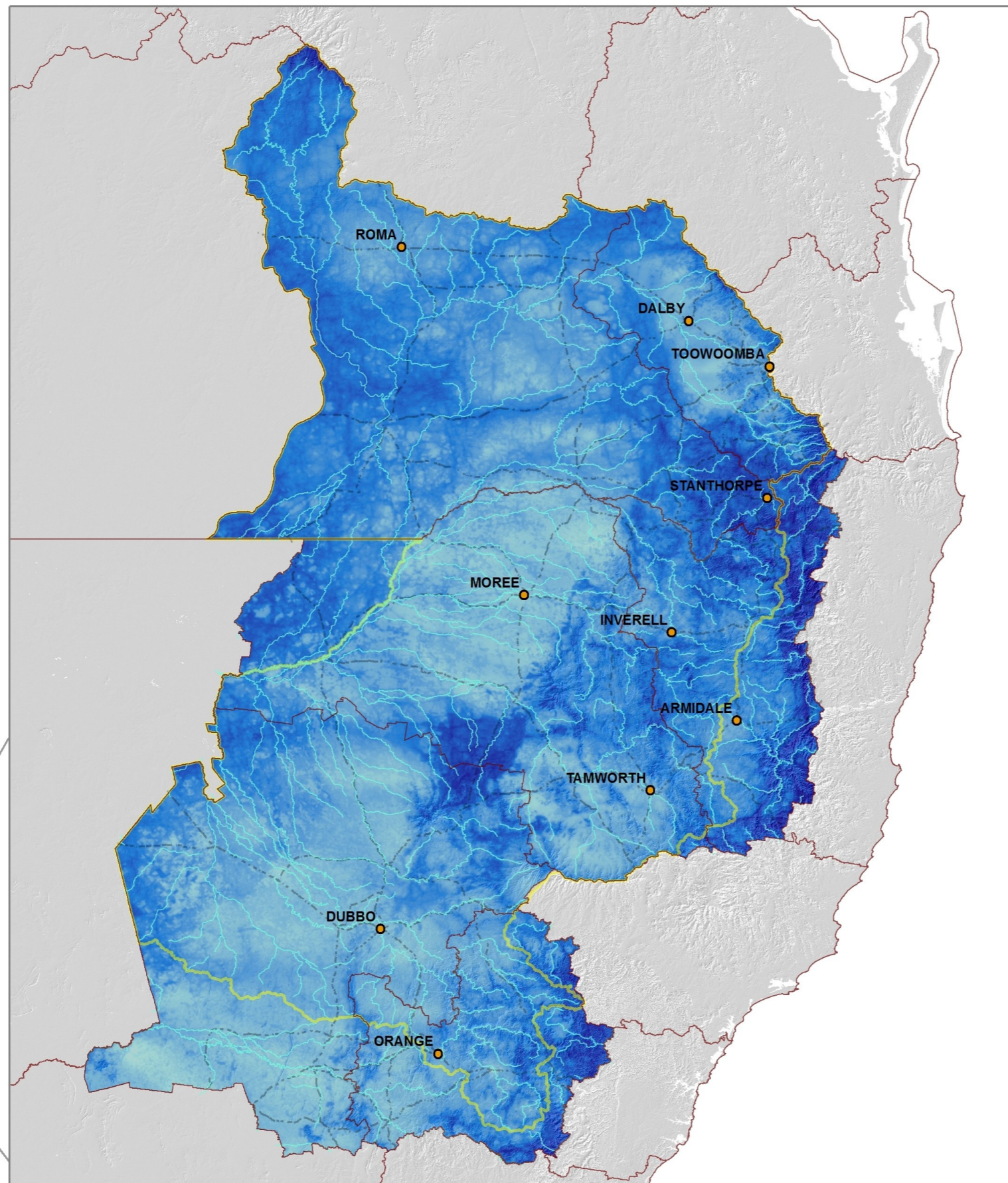
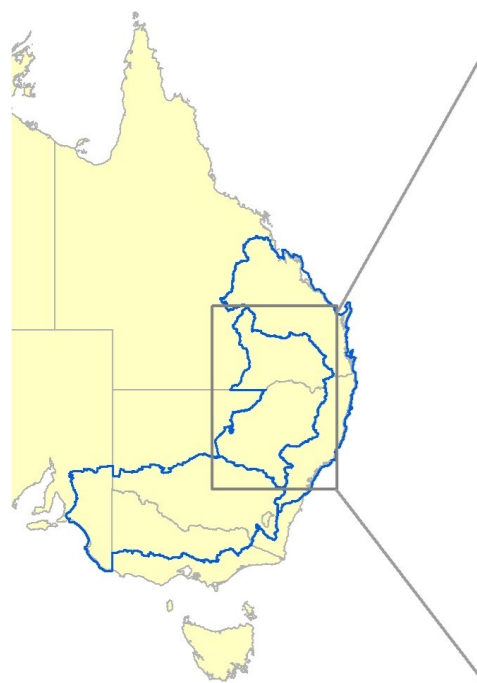


Biodiversity climate adaptation

3CLINKS Benefits (climate corridors)

1990-2050

Central Slopes Cluster



SUMMARY

3CLINKS benefits are derived by combining the outputs of three analysis:

- A multi-scale habitat links analysis based on 1990 climate;
- A multi-scale habitat links analysis (based on MPI-8.5 only) where currently extant bioclimatic envelopes are linked through extant vegetation to areas expected to support compositionally similar communities by 2050;
- New colonisations from any class predicted from a 3CMP model (based on MPI-8.5 only) where each colonisation is weighted by the 2050 estimate of conservation significance for the relevant community (from the BFT assessment).

LEGEND

Consolidate Benefits		East Coast, Central Slopes & Murray Basin Clusters
		NRM Boundaries
		Central Slopes Cluster
		Cities
		Major Rivers
		Principal Roads

HIGH
LOW

Models and map production by OEH NSW; GDM compositional turnover modelling by CSIRO Ecosystem Sciences, with funding from the Australian government.



An Australian Government Initiative



Office of Environment & Heritage

