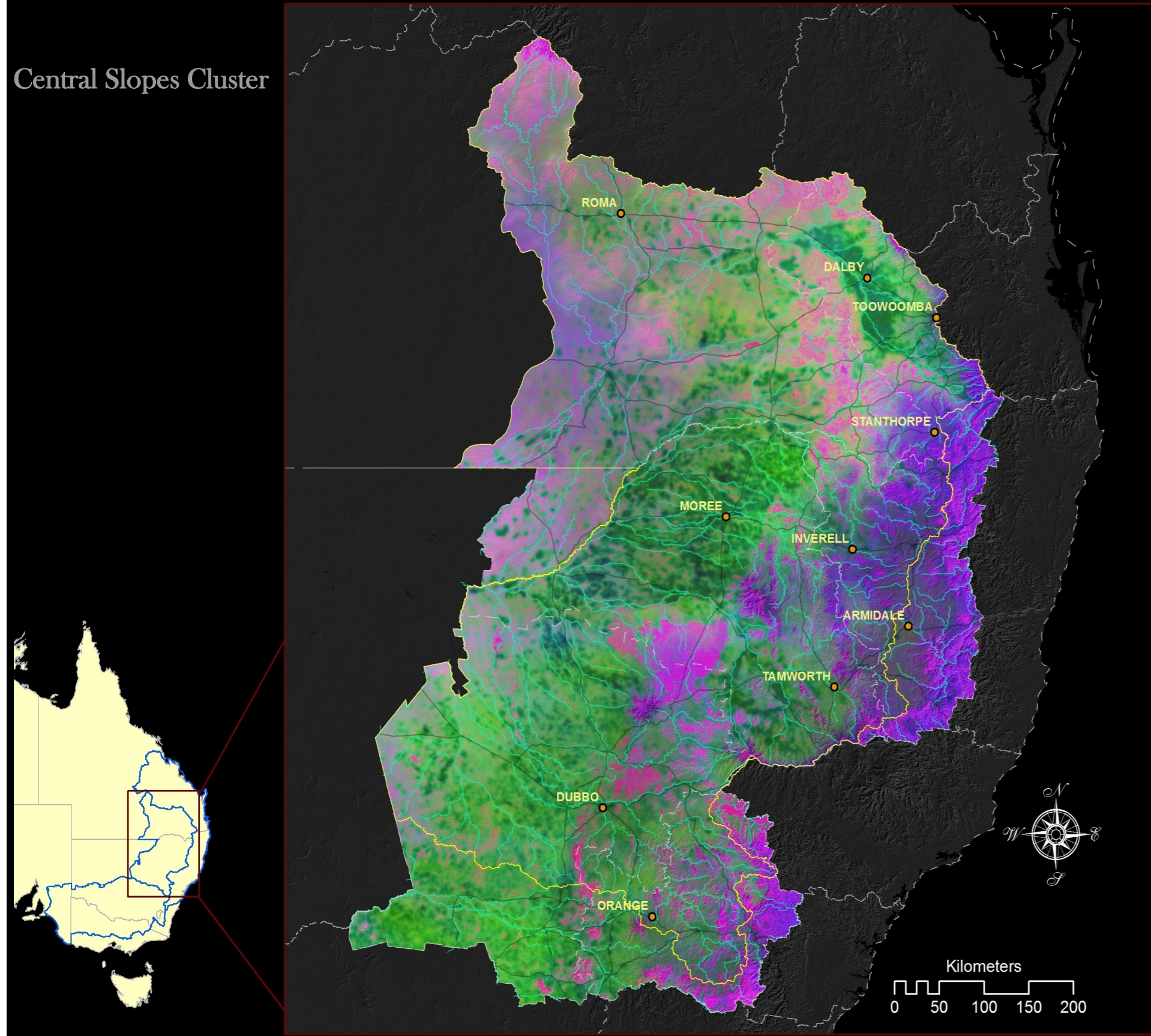


# Combined 1990-2050 climate adaptation native vegetation benefits

Central Slopes Cluster

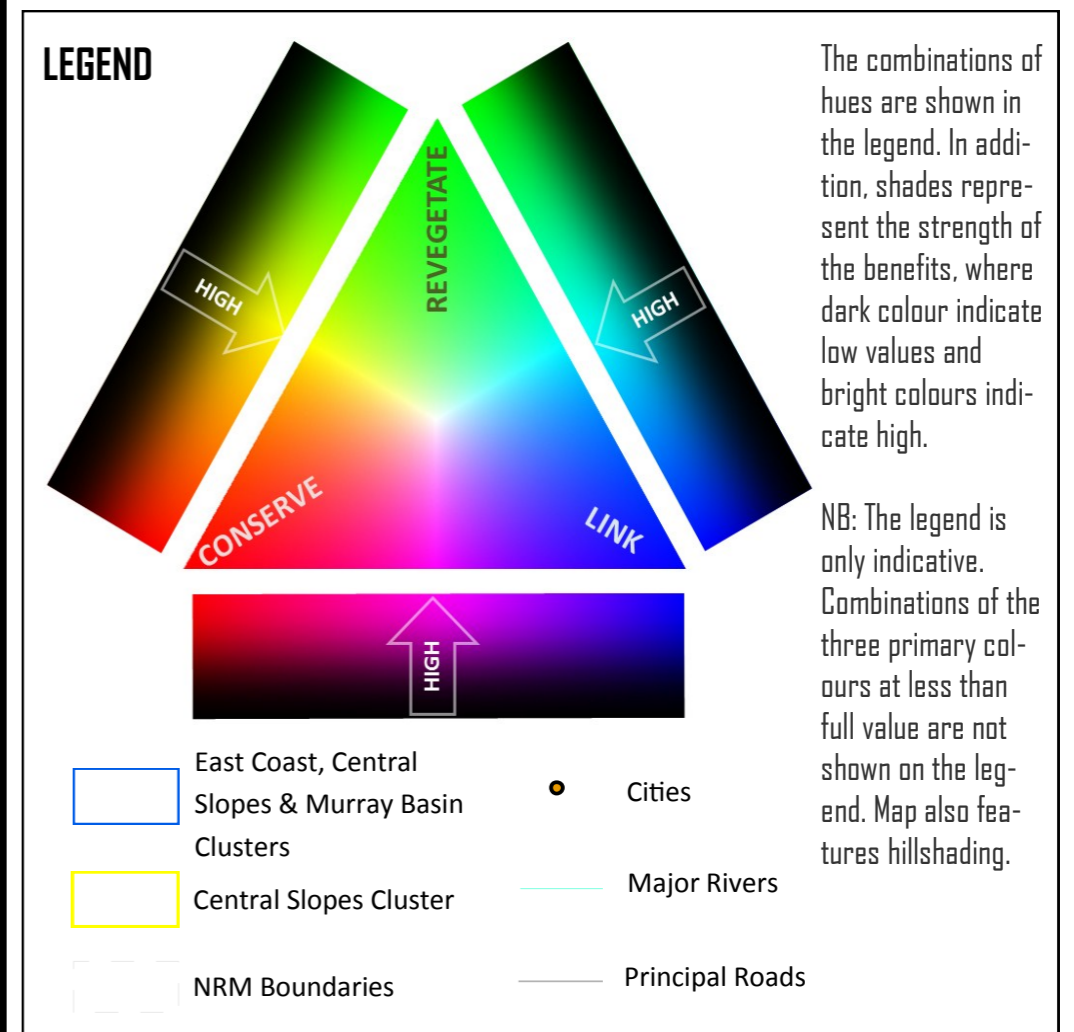


## SUMMARY

This map illustrates overlap across three native vegetation benefits: Conserve and Manage (Red); Restore and Revegetate (Green); and Connect or Link (Blue). Collectively the benefits combine conservation principles of representation, compositional similarity, connectivity, viability and ecosystem condition at this broad scale.

Benefits were derived based on 1990-2050 climate projections using MPI, CAN and MIROC GCMs, each at 4.5 and 8.5 RCPs, topographically downscaled to 250m resolution.

Each benefit was calculated separately. For detailed planning purposes, refer to the individual benefit products.



Models and map production by OEHS NSW with funding from the Australian government



Combined 1990-2050 climate adaptation  
native vegetation benefits NSW and  
East Coast, Central Slopes and  
Murray Basin NRM clusters

